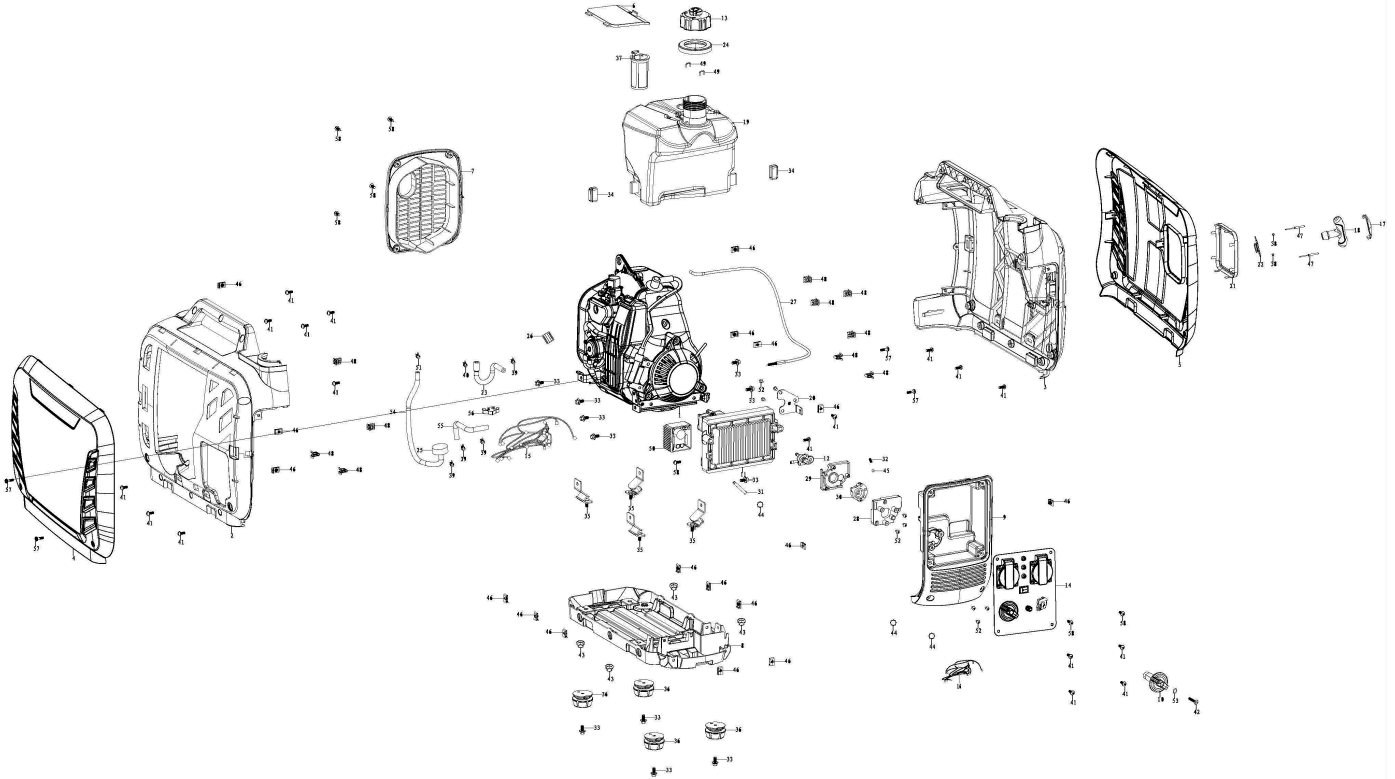


# schepach

5906226901

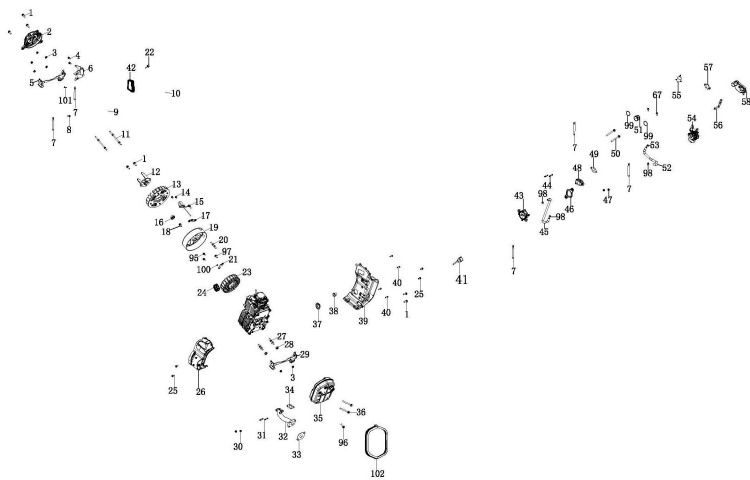
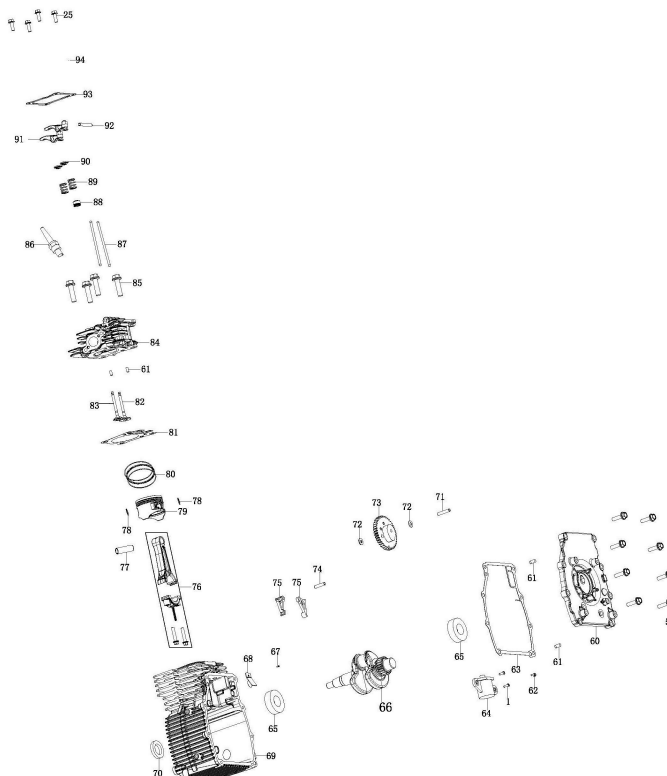
Power generator  
SG2500i schepach



# Scheppach

5906226901

Power generator  
SG2500i scheppach



## Main products

5906226901

## Spare part list

311320 - 0162 - SG2500i / IGT2500 - -

Spare	Description	additional	Item	Abb.	ConstructStatus
5906226001	Engine	DHP80	1	A	*
5906226002	Left Frame		2	A	*
5906226003	Right Frame		3	A	*
5906226004	Left Panel	RAL5010	4	A	RAL5010



**Main products**

**Spare part list**

5906226901

311320 - 0162 - SG2500i / IGT2500 - -

Spare	Description	additional	Item	Abb.	ConstructStatus
5906226036	Left Panel	RAL9005	4	A	RAL9005
5906226037	Right cover	RAL9005	5	A	RAL9005
5906226005	Right cover	RAL5010	5	A	RAL5010
5906226006	Observation cover		6	A	*
5906226007	bottom plate		8	A	*
5906226008	knob	Ø45	10	A	*
5906226009	inverter module		11	A	*
5906226010	fuel switch	Ø7,5 Anschluss	12	A	*
5906226011	Tank cap with gasket	Ø73	13, 24	A	*
5906226012	control panel assembly	(Scheppach SG2500i)	14	A	für Scheppach (SG2500i)
5906226039	control panel assembly	Rewe (IGT2500)	14	A	nur für Rewe (IGT2500)
5906226013	handle	Øi. 4,7	18	A	*
5906226014	fuel tank		19	A	*
5906226015	shock absorbing pad	Ø45/ Ø6,5	36	A	*
5906226016	filter elements	Ø36 oben / Ø31 unten x 70	37	A	*
5906226017	dc voltage regulator		50	A	*
5906226020	Impeller cpl.	Ø153	1,12,13	B	*
5906226018	Start the pull tray assembly		2	B	*
5906226019	Ignition coil		6	B	*
5906226021	rotor		19	B	*
5906226022	stator		23	B	*
5906226023	Muffler cpl.		32,34,35	B	*
5906226024	Air filter element		42	B	*
5906226025	Gasoline pump	Ø 8,3 bei Anschluss	43	B	*
5906226026	Carburetor assembly	Ø15 innen	54	B	*



**Main products**

**Spare part list**

5906226901

311320 - 0162 - SG2500i / IGT2500 - -

Spare	Description	additional	Item	Abb.	ConstructStatus
5906226027	Crankcase		60	B	*
5906226028	Crankcase cover gasket		63	B	*
5906226029	Oil sensor		64	B	*
5906226030	Crankshaft	M10 x 1,25	66	B	*
5906226031	Crankcase		69	B	*
5906226032	Connecting rod assembly		76	B	*
5906226033	Piston	Ø 48,7 x 38	79	B	*
5906226034	Piston ring assembly	Ø51 x 1	80	B	*
5906226035	Zylinderkopfdichtung		81	B	*
5906208039	spark plug	A7RTC	86	B	*
5906208040	spark plug wrench with pin part G w/o		o.Abb.	B	*
5906208066	DC charging line 12V part w/o	DC12V	o.Abb.	B	*
5906226038	funnel with hose		o.Abb.	B	*